

SLIDING WINDOW OPERATION & ADJUSTMENT



SG SERIES



FIGURE 1

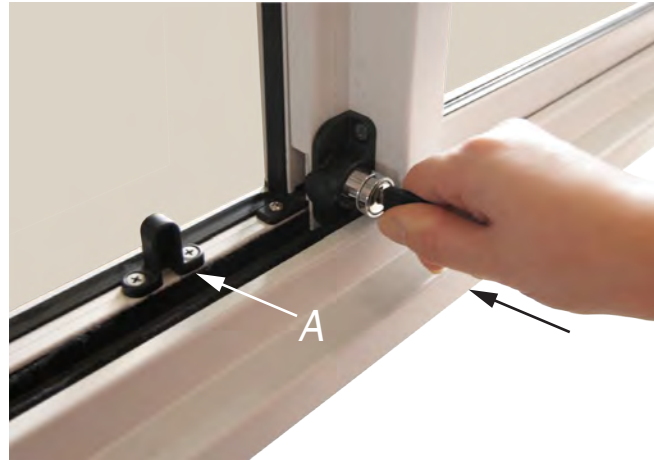


FIGURE 2

Operating Horizontal Sliding Windows

The SG Series Sliding Window has a key-operated push-lock. To open the window from closed, first unlock the key barrel. In-turn, this releases the internal barrel away from the window (Fig. 1). The **interlock** (vertical element in the centre of the window) is designed to be used for opening & closing the sash by hand.

To lock the window, slide the sash shut then press the lock barrel into its housing. A secondary locking position - for secure ventilation - is also provided. This is noted in Fig. 2 as "A", & provides 100mm of secured opening.

Adjusting Sliding Windows

To ensure your sliding window runs properly, you may need to adjust the leading **roller**. To do so, first remove the lower rubber grommet then insert a phillips head screw driver.

By rotating the screwdriver in a **clock-wise** direction, the end of the sash is **raised**, whilst the opposite action lowers that end. Use the outer frame, sash verticals & interlock for reference when squaring the window.

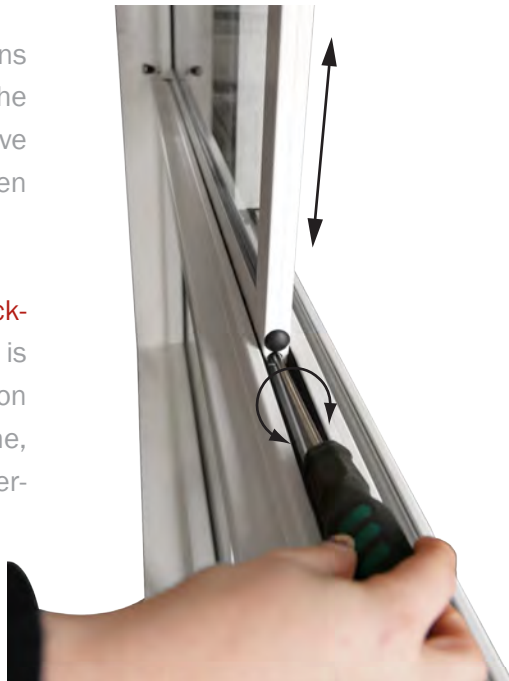


FIGURE 3

Flyscreen fitting & removal

To fit the flyscreen to an awning, first orient the screen with the 'finger pull' to the bottom. Then insert the top of the screen in the **channel** at the head of the window (see Fig. 4). Next, lift the screen with the finger pull so you can then lower it into the lower opening in the frame (see Fig. 5). Removal is by reversal of this process.



FIGURE 4

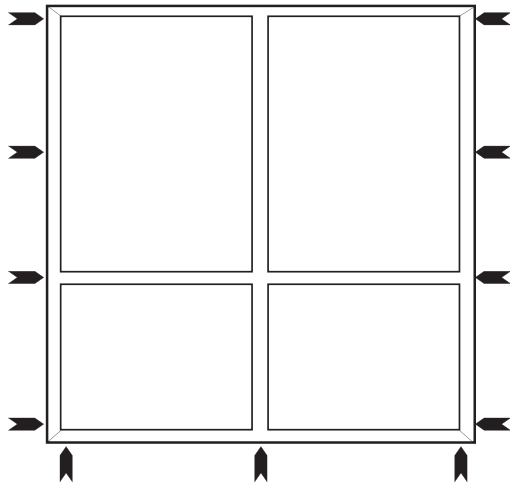


FIGURE 5

ATTENTION INSTALLER !!

- 1 Ensure that openings into which windows & doors are to be fitted have adequate clearance to the perimeter of the frames
- 2 Fit flashings where required in accordance with relevant Standards & Codes
- 3 Install frames square & plumb, with all sashes in their closed position
- 4 Allow a minimum of 10mm head clearance between frame trimmer / lintel, & window or door frame (except for Bifold, which needs minimum 30mm clearance)

*Under NO circumstance should building loads be carried by the non-load bearing window or door assemblies / fittings.



- 5 Pack & fix windows & doors at the points illustrated in the above diagram. Where reveals are fitted, the pre-drilling of these is recommended to prevent the splitting of the timber

*Additional fixings may be required in high wind-load areas

- 6 Allow a minimum of 10mm clearance between product sills & any sill bricks
- 7 The entire length of the sill should be supported on all door products
- 8 Ensure that sill drainage holes are NOT covered by external claddings or coatings

ON SITE CARE

On site, products should be stored in a clean, dry area away from cement, lime, paint etc prior to installation. Once installed, all products should be protected from fallout such as wet plaster, mortar, render, paint, grinding & welding spatter. An effective method is to cover the face of your product(s) with clear plastic, or have an approved coating applied. If strippable coatings or pressure sensitive tapes are used to protect exposed surfaces, care should be taken NOT to damage the finish during their removal. Prolonged exposure to sunlight can make them increasingly difficult to remove. Should substances such as wet plaster, mortar or render fall onto the product, the substances should be removed immediately & the soiled area washed down with clean water.

A primer or sealer should be applied to internal timbers to preserve exposed surfaces during construction.

Door tracks & sills should be protected to avoid damage from planks, scaffolding, barrows etc.

Contact your Rylock Sales Office on the number below for further recommendations on protective coatings.

MAINTENANCE

ALUMINIUM FRAMES

The external face of window & door frames should be washed with a mild detergent & clean water to remove deposits. If the product is exposed to salt air or industrial pollutants, it should be washed every 3 months. Keep tracks free from dirt & grit to avoid premature wear. Ensure drainage slots are kept clear to maximise drainage performance.

GLASS

To clean, flood the surface with a spray on solution, or with a cloth saturated with the cleaning solution. Scrub the wetted area with a clean, lint-free towel or cloth. Wipe dry with a clean, lint-free towel or cloth.

TIMBER

The internal surface finish should be kept clean, & refinishing of the timber should be undertaken when coatings either break down or wear away.

HARDWARE

Keep locks, hinges & wheels / rollers clean. Regularly lubricate with silicone spray to ensure optimum performance. Note that cleaning & lubrication of hardware should be performed monthly in coastal areas.

STAINLESS STEEL FLYSCREENS

Stainless steel fly-screen mesh needs to be cleaned regularly with warm soapy water & a soft cloth, to remove build-up of salt & dirt, which increases the potential for tea-staining (on stainless mesh). This needs to be undertaken yearly at minimum, with cleaning required monthly for buildings in close proximity to the ocean.

ADJUSTMENTS

All products should be adjusted as required to maintain correct performance. Instructions on reverse page.

BRUNSWICK Factory 2 / 17 Hope Street, 03 9385 8700

CLAYTON Home Ideas Centre, 1686 Princes Hwy, 03 9542 7100

MENTONE 47 Shearson Crescent, 03 9581 7200

SYDNEY 3 Ellis Avenue, Alexandria, 02 8335 4400



CANBERRA

HIA Home Ideas, Collie St, Fyshwick, 1800 RYLOCK

HOBART

Building Selection Centre, 309 Liverpool St, 1800 RYLOCK

LAUNCESTON

Building Selection Centre, 262 York St, 1800 RYLOCK

ADELAIDE

26 Audley St, Woodville North, 08 8413 5500